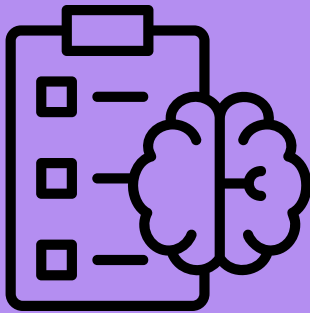


PHYSICAL THERAPY'S IMPACT ON SOCIETY

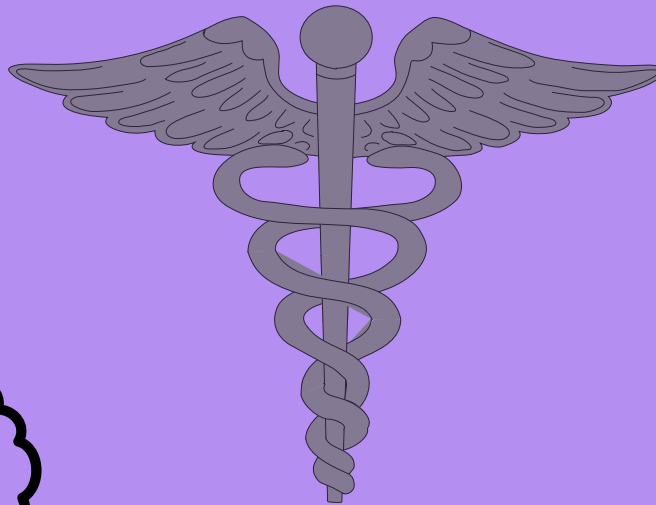
What is Physical Therapy?

Rehabilitation for physical function through exercise to increase mobility and, range of motion due to disease or injury.



Importance

- PTs create specific treatments tailored for patients
- Restores physical function
- Helps strengthen muscles
- Injury prevention



Real World Connection

- Works with community for outreach programs
- Promotes public awareness
- Improvement with patient physical movement through life



American Physical Therapy Association & Purpose

- Helps incoming Physical Therapy students
- Better access to physical care
- Builds a professional community
- Promotes physical health
- Invests in primary patient care